

News

and Information Publication

December 2009

www.jefferson.k12.wi.us

Published with financial support from Tyson Foods.



Valuable Communication Tool—AlertNow—Implemented

by Michael Swartz, Superintendent

The district now has a valuable tool to communicate with parents, students, and staff at a moments notice. The district recently purchased the AlertNow rapid communications system. AlertNow gives our school district the capability to send e-mails, voice, and text messages within minutes to telephones or any Internet-enabled device, including mobile phones and computers. Informing parents of potential school delays/cancellations, upcoming events, and/or health-related updates will be major uses for the system.

AlertNow, designed specifically to address school communication needs, supplements conventional school communications and replaces outdated phone trees and automated dialing tools that require staff resources and large blocks of time to deliver messages to multiple recipients.

Keeping our parents informed has always been a top priority and, with the assistance of AlertNow, we will be more efficient. Parents are reminded to keep your child's school informed of any changes in your contact information.

2010 Registration Dates Set for K-4 and 5K Programs

by Connie Pellmann, East Elementary Principal

K-4

Parents of children wanting to register their child for the K-4 Program can do so on Tuesday, January 19. Those wanting to register for the Small World or Head Start programs should register in the gymnasium at East Elementary School. Sullivan K-4 registration will be held at Sullivan School. Registration at both sites will be from 6:00-7:30 p.m. If you would like to visit a particular K-4 site prior to registration, please contact that site at the number below to make an appointment.

- Small World Preschool, 324 S. Sanborn Ave., Jefferson / Contact Person: Theresa Brawders – 920-675-0123
- Head Start at East Elementary School, 120 S. Sanborn Ave., Jefferson / Contact Person: Katie Trefftz – 920-674-2625
- Sullivan Elementary School, 618 Bakertown Rd., Sullivan / Contact Person: Jaclyn Bystol – 920-675-1562

5K

If you have a child that will turn five years old on or before September 1, 2010, and will be entering Kindergarten for the 2010-2011 school year, registration will be held during the week of January 11-15 at the following schools:

- Sullivan Elementary, 618 Bakertown Road, Sullivan, (920) 675-1500
- East Elementary, 120 S. Sanborn Ave., Jefferson, (920) 675-1400
- West Elementary, 900 W. Milwaukee Street, Jefferson, (920) 675-1200

Parents are asked to register their child at the elementary school located in the area in which you reside. Please bring a birth certificate to verify your child's age.

At registration, parents will receive a packet of information and will arrange an appointment for Kindergarten "Round Up" that will be conducted in March. The dates for Kindergarten Round Up are as follows: East Elementary: Tuesday, March 23; West Elementary: Wednesday, March 24; and Sullivan Elementary: Thursday, March 25.

Please contact the appropriate school at the number listed above for any questions.

by Donald Nolan, Director of Special Education and Pupil Services

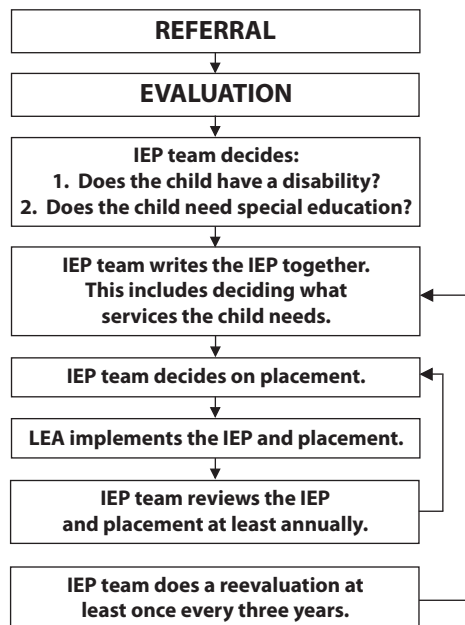
PROGRAM OVERVIEW

The School District of Jefferson's Special Education program is designed to provide a variety of services to children who have some type of disability (certain types of difficulties that interfere with school success). Through special education, students with disabilities receive specialized instruction and, if appropriate, modifications in curriculum. This specialized instruction differs from remedial education for non-special needs students in that special education provides individualized instruction that focuses on students' abilities and different learning styles. All special education staff members continue to offer high quality specialized educational services to students and their families. We are fortunate to have special education and regular education teachers who effectively work together to provide excellent educational programs.

THE PROCESS

Under current law, services can be provided to children with disabilities between the ages of 3 and 21 and not yet graduated from high school. Once a child is suspected of having a disability, an evaluation process is put into place. Federal law dictates that for new referrals of students, the process of determining whether a child has special education needs may take no more than 60 calendar days from when the parents sign permission to evaluate their child.

The chart at right provides an overview of the process



from start to finish. Although this chart shows a series of decisions, all the decisions are connected and centered on the needs of the child. For example, when IEP team members talk about the evaluation, they also think about what services the child will need and where the child will be provided the services. For some children, all the IEP team's decisions can be made in one meeting. For other children, the IEP team will need to meet together several times. Anyone on the IEP team can ask for more time if it is needed. Anyone on the IEP team can also ask for an IEP team meeting to be held if there are changes to be discussed.

TERMINOLOGY

Special education has a language of its own. On occasion, school staff members may use acronyms in place of the full title. To avoid any confusion, the following list of terms and their meanings is provided.

IEP TEAM: Individual Education Plan Team is a group of school staff members, parents, and others that either the school staff members or parents choose to include.

LEA: Local Education Agency or the School District (www.jefferson.k12.wi.us)

DPI: Department of Public Instruction—the state agency that oversees the Local Educational Agency (www.dpi.state.wi.us)

FAPE: Free Appropriate Public Education. LEAs are required to provide FAPE for all children enrolled in special education in public schools in their district.

CESA: Cooperative Educational Service Agency. This is a state-funded agency that provides special services to schools. Schools buy services from CESA, but the school is still responsible for the services. (<http://www.cesa2.k12.wi.us>)

LRE: Least Restrictive Environment

2007-08 REPORT DATA

The State of Wisconsin has changed the type of data that is being reported to parents on an annual basis. The information now relates to performance indicators that are statewide.

There are currently eight indicators where data has been collected by the Department of Public Instruction. There are other indicators as well, but data is not currently available. All of the data relates to the 2007-08 school year. Information from the 2008-09 school year is not yet available. The 2007-08 report data follows on page three.

Indicator 1: Graduation

| Percent of students with disabilities graduating from high school with a regular diploma | | |
|------------------------------------------------------------------------------------------|-------|--------------------|
| Local | State | Target |
| 68% | 79% | At or above 84.08% |

Data Source: Individual Student Enrollment System (ISES),
School Performance Report (SPR)

Indicator 2: Dropout

| Percent of students with disabilities dropping out of grades 7-12 | | |
|-------------------------------------------------------------------|-------|-------------------|
| Local | State | Target |
| 1.587% | 2.59% | At or below 1.67% |

Data Source: Individual Student Enrollment System (ISES)

Indicator 3: Assessment

| | | Local |
|----|--------------------------------------------------------------------------------------------------------------|-------|
| A. | District met the state's Adequate Yearly Progress (AYP) objectives for students with disabilities in Reading | Yes |
| | District met the state's Adequate Yearly Progress (AYP) objectives for students with disabilities in Math | Yes |

For more information, go to <http://www2.dpi.state.wi.us/sifi/>.

| B. | Participation rate for students with disabilities on regular or alternate statewide assessment | | |
|--------------------|------------------------------------------------------------------------------------------------|-------|-----------------|
| | Local | State | Target |
| 4th Grade Reading | 100% | 98% | At or above 95% |
| 8th Grade Reading | 100% | 98% | At or above 95% |
| 10th Grade Reading | 100% | 96% | At or above 95% |

| | | | |
|-----------------|------|-----|-----------------|
| 4th Grade Math | 100% | 99% | At or above 95% |
| 8th Grade Math | 100% | 98% | At or above 95% |
| 10th Grade Math | 100% | 96% | At or above 95% |

| C. | Percentage of students with disabilities who scored at the proficient and advanced levels on regular or alternate statewide assessment | | |
|--------------------|----------------------------------------------------------------------------------------------------------------------------------------|-------|-------------------|
| | Local | State | Target |
| 4th Grade Reading | 58% | 51% | At or above 67.5% |
| 8th Grade Reading | 59% | 47% | At or above 67.5% |
| 10th Grade Reading | 25% | 32% | At or above 67.5% |

| | | | |
|-----------------|-----|-----|-------------------|
| 4th Grade Math | 59% | 52% | At or above 47.5% |
| 8th Grade Math | 54% | 37% | At or above 47.5% |
| 10th Grade Math | 15% | 26% | At or above 47.5% |

For more information, go to WINS at <http://www.dpi.wi.gov/sig/>
Data Source: Wisconsin Student Assessment System

For additional report information, please contact Don Nolan, Director of Special Education and Pupil Services, at (920) 675-1062, or access the Department of Public Instruction's Web site at: <https://www2.dpi.state.wi.us/DistrictProfile/Pages/DistrictProfile.aspx>.

Indicator 4A: Suspension/Expulsion

| Percent of students with disabilities suspended or expelled for greater than 10 days in the school year | | |
|---------------------------------------------------------------------------------------------------------|------------------------------------------------------------------------|------------------------------------------------------------------------------------|
| Local | State | Target |
| 5 or fewer students which is less than half of 1% | 1.14% for Grade PK-12 Districts; 1.37% for Union High School Districts | At or below 3.29% for Grade PK-12 Districts; 6.96% for Union High School Districts |

Data Source: Individual Student Enrollment System (ISES),
School Performance Report (SPR)

Indicator 5: School Age Educational Environment

| | Local | State | Target |
|----------------------------------------------------------------------------------------------------------------------------------------------------------------|-------|-------|-----------------|
| A. Percent of students with disabilities, ages 6-21, removed from regular class less than 21% of the day | 41% | 54% | At or above 53% |
| B. Percent of students with disabilities, ages 6-21, removed from regular class greater than 60% of the day | 13% | 11% | At or below 11% |
| C. Percent of students with disabilities, ages 6-21, served in public or private separate schools, residential placements, or homebound or hospital placements | 3% | 1% | At or below 1% |

Data Source: Federal Student Data Report (Child Count)

Indicator 6: Preschool Educational Environment

| Percent of preschool children with disabilities who received special education and related services in settings with typically developing peers (e.g., early childhood settings, home, and part-time early childhood / part-time early childhood special education settings) | | |
|------------------------------------------------------------------------------------------------------------------------------------------------------------------------------------------------------------------------------------------------------------------------------|--------------|---------------|
| Local | State | Target |
| Not reported | Not reported | No target set |

Indicator 11: Timely Evaluations

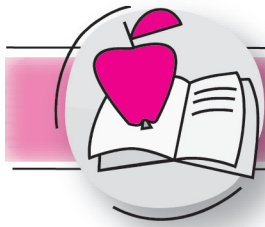
| Percent of children with parental consent to evaluate, who were evaluated and eligibility determined within 60 days | | |
|---------------------------------------------------------------------------------------------------------------------|-------|--------|
| Local | State | Target |
| 100% | 98% | 100% |

Data Source: Procedural Compliance Self-Assessment

Indicator 12: Early Childhood Transition

| Percent of children referred by a Birth to Three agency prior to age 3, who were found eligible for special education and related services by a local education agency, and who had an individualized education program (IEP) developed and implemented by their third birthday | | |
|---------------------------------------------------------------------------------------------------------------------------------------------------------------------------------------------------------------------------------------------------------------------------------|-------|--------|
| Local | State | Target |
| # of children identified was not sufficient to establish a valid percent | 86% | 89% |

Data Source: Local Performance Plan (LPP)



News from the Schools

East Elementary Character Clubs Raise Funds for Habitat for Humanity

by Connie Pellmann, East Elementary Principal

East Elementary's October character clubs were a huge success. Our October club meetings focused on respect, especially showing it to others in our community. We collaborated with Habitat for Humanity to raise funds to help build homes for families in need. There is currently one home being built on Whitewater Avenue, right here in Jefferson! It is likely that the children of the family moving into that home will attend East Elementary School. The mission of our character clubs was to collect coins for this project.



Pictured above collecting coins for Habitat for Humanity are (left to right): Gabby Gottinger, Megan Magner, and Claire Jessup.

The clubs met on Wednesday, October 14, during morning recess time. Club leaders led a discussion on the qualities of respect, including how we respect ourselves, others, and our community. All children were introduced to the concept of the Habitat for Humanity program and learned how they could lead efforts to help build homes for families in need. Some clubs viewed an informational video, while others read books about respect and helping others. The best part of our club meetings was working together to count all the coins and bills, and putting the cash into the little cardboard houses provided by the Habitat for Humanity organization. Lauren Cravens, Executive Director for the Jefferson County Wisconsin Habitat for Humanity, and her assistant Ann, were on hand to take pictures and to help count and collect the coins.

When all was said and done and the sheets were tallied, we were excited to announce that the East Elementary character clubs raised a grand total of \$1,331.81 in coins and some small bills. This total far exceeded the expectations of the Habitat for Humanity organization and the character club members. A two-wheel cart was needed to get the coins to the bank to be counted. Habitat for Humanity staff was so grateful that they offered to buy ice cream for everyone at East Elementary. All adults and children alike felt a great sense of pride knowing that our character clubs could be so helpful to the community. Everyone should be congratulated for a job well done. We all look forward to that ice cream!! Thank you to character club planners Karissa Paar, Kristin Rousseau, Marianne Vogel, and Anna Miller for organizing this wonderful club event.

Energy Drinks... Healthy or Not for Adolescents?

by Mark Rollefson, Middle School Principal

I would like to address the issues and health concerns related to student use of various energy drinks. The research over the past several years has been overwhelmingly supportive that energy drinks are unhealthy and quite risky for adolescents. Since about 1997, when the energy drink market started to take off, it has climbed to a billion dollar industry. When you visit the websites of various companies they give clear advice that their product is not intended for children. Nonetheless, the marketing appears to target teenagers.

Proper diet, exercise, and a good night's rest all impact how well a student can focus while in school. We believe that energy drinks, or any sort of caffeine boost, is a factor that has a significant adverse affect on a student's concentration level. We also believe that students are more fidgety and disruptive when their bodies are under the influence of caffeine. Many of these energy drinks have other ingredients besides caffeine that also cause concern for the health of our youngsters. You may find it interesting to know that a few of the energy drinks even have alcohol as one of their ingredients.

Although we respect the fact that parents can choose what they allow their child to eat or drink at home, we do ask that you support our request that students not be allowed to bring energy drinks to school, consume energy drinks at school, or consume energy drinks prior to the school day. We certainly encourage you to ban energy drinks at home as well.

We believe that the vast majority of parents will be in support of our effort to reduce and eliminate the consumption of energy drinks at school. It would be greatly appreciated if you share your support of this decision with your child

so that they see that we (school and home) are working together in this regard.

If you have any questions, concerns, or supportive comments, please contact me at (920) 675-1300.

Agriculture/Science Equivalency Credit Being Studied

by Dr. Donna Thomas, Interim Director of Curriculum and Instruction

Recently, the Wisconsin Department of Public Instruction (DPI) announced a new science/agriculture equivalency credit option for students. This option creates a process and procedure to certify the science knowledge acquired by high school students in certain agricultural education classes.

The DPI is currently working with University of Wisconsin institutions and other campuses in the state to ensure that this certification will be accepted in admission to colleges and technical institutions. It has school districts following a standardized step-by-step standards-based process to evaluate the rigor of the science content in agricultural education classes. The process is lengthy and involves identifying science standards that are also taught in various agriculture courses. Not all agriculture courses will qualify to be considered for science equivalency. Once local educators complete the process and state required procedures, the district may apply for official agriculture-science credit equivalency for the course(s) that qualify from the DPI.

Career Technical Education staff in the area of agriculture has just begun exploring the possible agriculture/science option for development and implementation at Jefferson High School. In the future, meetings will be held between the science and agriculture departments to determine the viability of the concept for local implementation.

Sullivan Stingers Are Busy Bees!

by John Orcutt, Sullivan Elementary Principal

The forecast: Cloudy with a Chance of Meatballs! On October 9, students from Sullivan participated in an all-school literacy event by studying the book *Cloudy with a Chance of Meatballs* and watching the new movie at the theater. During the week of October 5, the Stingers prepared to see the movie by not only reading the book, but also learning about making comparisons. Upon their return to school after seeing the movie, the students compared and contrasted the movie to the book. Sullivan certainly is a beehive of learning! The Stingers rated this movie Two Thumbs Up!

During October, Sullivan received a very generous donation from the Orbis Corporation. Mr. Terry Harstford, an employee of the Orbis Corporation and Sullivan parent, presented a \$250 check to Mrs. Kathy Sheard, Art teacher, and Mrs. Amy Meyer, Vocal Music teacher. Mr. Harstford expressed his appreciation for the Fine Arts course offerings at Sullivan. Mrs. Meyer will be utilizing her \$250 by purchasing a computer program, Groovy Music, to facilitate student composition in music. Mrs. Sheard will be purchasing a pottery wheel with her funds and additional funds provided by the Sullivan PATHS organization. A huge THANK YOU from the Fine Arts department at Sullivan to the Orbis Corporation—without you, these purchases would not have been possible for our students.

What's the beehive buzz at Sullivan? For the annual Halloween parade 20 Sullivan

Stinger staff members dressed as bees to celebrate Halloween. All the students, grades Kindergarten to five, participated in a musical parade. The fifth grade choir began the festivities with a spooky kazoo feature, "Tocatta and Kazoogue in D Maybe," a piece based on J.S. Bach's famous organ piece "Tocatta and Fugue in D minor." Each grade sang a song that had a Halloween theme, and the show closed with a parade around the gym. Great job everyone!



JSD Represented at National Music Conference

*by Judy Brauer, West Elementary
Vocal Music Teacher*

From November 11-14, 2009, over 1,200 music educators from around the world assembled in Milwaukee for the American Orff-Schulwerk Association's (AOSA) annual Professional Development Conference at the Midwest Airlines Center in Milwaukee.

AOSA is a nonprofit organization of music and movement teachers inspired by the educational work of Carl Orff and his colleague Gunild Keetman. We believe that active music-making is a crucial component of each child's education. This conference presented an opportunity for local educators to expand their skills, share ideas, and renew their commitment to the teaching of music and movement to students of all ages.

Judy Brauer, West Elementary music teacher, was the Local Conference

Chair for the event. Kris Kyle, East Elementary music teacher, was the Children's Art Chair. Mike Howard, West Elementary principal, introduced Esther D'Agrosa in her session "Compelling Connections: Reading and Music" and Paul Cribari's session: "The Legacy of Orff Schulwerk in the Modern Classroom." Mike Swartz, superintendent, introduced Bob Machajewski who presented "Basic SMART Board" and Tim Purdum who presented "Technology and the Schulwerk."

We are pleased that Jefferson was well represented at this national conference held in Wisconsin.

OCHO Project Helps Teach Students Compassion for Others

by Tami Hess, West Elementary Cross Categorical Teacher

About 300 students at West Elementary School will be participating in a project to read and "earn" books for their fellow students. Our goal is for each student to raise \$8 through pledges for reading eight books.

West Elementary's student council, which consists of 16 fourth and fifth graders, has introduced OCHO (Other Children Helping Others) to the entire student body. OCHO is a service learning project that helps expose children to the world-wide issue of literacy and that one in seven individuals cannot read. This project will also help shape character at West Elementary by helping students learn honesty, caring, and responsibility. By asking students to read and share books we are promoting reading while helping other students who are in need.

The funds collected from this reading project will be sent to a used book store in Miamisburg, Ohio, called Look At A Book. This store will work closely with West Elementary School to send enough books so that each student will get one to two gently used books at a free book fair to be held in March.

We often have book fairs at West, but unfortunately many students can't afford to buy books. This project will help ensure that all students will receive at least one book to share at home.

We are asking that if any businesses would like to hold a book drive for gently used children books it would be greatly appreciated. In addition, if any community members would like to make donations, please contact Tami Hess at West Elementary School, at hess@jefferson.k12.wi.us, or leave a message at (920) 675-1263. The date of January 11 has been identified as our deadline for receiving books/funds.

Please consider being part of our service learning project either by donating a book or becoming a reading sponsor. Making a difference in another person's life...it's **The Jefferson Way!**

October Citizen of the Month Award Recipients

On November 23, the Board of Education honored the following October recipients of the Citizen of the Month Award for being positive role models and for demonstrating good character:

| | | | |
|-----------------|----------------|----------------|---------------|
| Sullivan Elem.: | Kendrah Kaiser | Middle School: | Mitchel Becht |
| West Elem.: | Claire Peachey | High School: | Megan Kevin |
| East Elem.: | Seth Wild | | |

Attendance Matters

by Craig Brimacombe, High School Principal

As cold weather approaches and temperatures drop, students are often tempted to take a day off from school and stay under the covers. This article emphasizes that attendance influences student achievement. A primary goal at Jefferson High School is to prepare students to think critically and problem-solve. This is reinforced in each of our classrooms and the task is better achieved if a student is in class. According to a recent study by the Bill and Melinda Gates Foundation, up to 65 percent of students with poor attendance in school do not graduate with a high school diploma.

In addition, it has been well documented that a healthy attendance record not only results in better academic grades but also correlates with fewer behavioral issues in and out of school. The state of Wisconsin has a mandatory attendance law for children ages 6 through 18. This means it is the responsibility of each student to be in school and that parents make certain their student is in attendance. If a student is found to be truant from school or a class, consequences can include community service, Saturday school, or a referral to law enforcement.

Here are a few tips that may positively influence student attendance:

1. Prep the night before. Lay out clothes, pack lunch, and backpack.
2. Don't wait until the next morning to make transportation arrangements.
3. Get enough sleep. Strive for eight to nine hours a night.
4. Don't make mornings too hectic. Finish homework the night before.
5. Try to schedule doctor appointments after school.
6. Plan family vacations for days when school is not in session.

If students miss a class due to an

excused absence, they should contact their teachers to make arrangements for homework.

As we go through the school year, let's work together to send the message that attendance matters.

Senior Citizens' Lunch Days

by Rebecca Blyth,
Student Nutrition Director

Senior Citizen lunches for the month of December will be served beginning at 11:00 a.m. at Jefferson High School and Sullivan Elementary School on the following dates:

December 3:

Beef Taco with Fixins,
Spanish Rice, Salsa, Juice

December 17:

Chicken Alfredo with Pasta,
Garden Salad, Garlic Breadstick

If you would like to sign up for lunch, please contact Rebecca Blyth, Student Nutrition Director, at (920) 675-1035.

Celebrate the Season

December will officially kick off the holiday season with many opportunities to attend school concerts. The students of our district have been working hard in preparation for their concerts and would thoroughly enjoy having a large audience in attendance. Mark your calendars for the following:

- December 8: Middle School Band and Choral Concert, 7 PM, HS Audit.
- December 10: Sullivan 5th Grade Choral Presentation, 6:30 PM, at Sullivan
- December 10: West Elem. 5th Grade Choral Presentation, 7 PM, at West



- December 10: East Elem. 5th Grade Choir Concert, 7 PM, at East
- December 14: High School Band and Choir Concert, 7 PM, HS Auditorium
- December 15: East Grades 3-4 Holiday Program, 6:30 PM, East Gym
- December 16: East Kindergarten Holiday Program, 2 PM, East Gym
- December 17: East Grades 1-2 Holiday Program, 6:30 PM, East Gym

School Board Election Time Line

Individuals interested in running for a School Board seat must declare their candidacy by completing nomination papers no later than 5:00 p.m. on January 5, 2010. The scheduled spring election will be held on April 6, 2010. On this date school board vacancies will be filled. The following school board seats will be up for reelection on April 6:

Two (2) Area IV (At-Large) seats—currently held by David Krause and Nicole Pupanek
One (1) Area III (Townships of Concord, Sullivan, and the Village of Sullivan) seat—currently held by Norman Stoner

For election paperwork information contact Mary Ellen Taylor at the District Office (920-675-1041).



by Sandy Swartz, Volunteer Character Education Coordinator

Can You Help?

The Character in Action Community Action Team typically meets on the first Tuesday of each month, beginning at 7:00 a.m., for one hour. The action team, which consists of dedicated business individuals and other community members, meets to discuss how to integrate "character" into the workplace and other community settings. Over the past six years, this team has successfully planned and implemented many activities related to character in our community.

A focus for this year is to involve families in the planning and implementing of character into their homes. Another goal is to find community volunteers who are willing to assist with the many needs of our classroom teachers (i.e., reading to students and listening to students read, sharing your life experiences, or possibly speaking to a class about your job, hobbies, etc.).

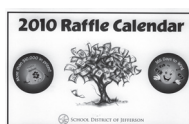
The next Community Action Team meeting is scheduled for December 1, at 7:00 a.m., at the District Office, 206 S. Taft Avenue, Jefferson. For more information about our "call for help" contact:

Mike Swartz, Superintendent, (920) 675-1013

Tom Pinnow, Community Action Team Chairperson, (920) 674-5542

Sandy Swartz, Volunteer Coordinator, (920) 675-1050

Last Chance to Purchase Raffle Calendars



Since the first drawing for the 2010 Raffle Calendar will be on January 1, this is the last month to purchase calendars. The prize amount that will be won on January 1 is \$100, and whoever wins that day will have 364 more chances to win as their name will immediately be put back in the bin for the next drawing.

The cost for a calendar is \$20. Call Sandy Swartz at (920) 675-1050 to place your order today... they make great gifts!

December Calendar of Events

- 1 • West Elem. Secret Santa Workshop
• MS P.T.O. Mtg., 5:30 PM, Cafeteria
• 7th & 8th B BB @ J. Creek, 4 PM
• 9th/JV/V B BB vs. Fort (H), 5:45/7:15 PM
- 2 • West Elem. Secret Santa Workshop
- 3 • Special Connections Parent Group Meeting, 6 PM, East Library
• West Elem. Secret Santa Workshop
• 7th B BB @ Riverside MS, 4 PM
• 8th B BB vs. Riverside MS (H), 4 PM
• 9th/JV/V B BB @ Edgerton, 5:45/7:15 PM
• B Swimming SLC Conf. Relays @ Whitewater, 5:30 PM
• Wrestling vs. Edgerton (H), 7 PM
- 4 • West Elem. Secret Santa Workshop
• 9th/JV/V G BB @ Big Foot, 5:45/7:15 PM
• Gymnastics Early Bird Cardinal Classic @ Sun Prairie, 6 PM
- 5 • Wrestling Blue Jay Invitational @ Cambridge, 9 AM

**December 7-14:
Christmas Neighbors Collection**

**December 7-11:
HS Progress Report Week**

- 7 • MS Market Day Orders Due, 3 PM, Cafeteria
• Gymnastics @ Markesan, 6:30 PM
- 8 • MS Band & Choral Concert, 7 PM, HS Auditorium
• 7th B BB @ L. Mills, 4 PM
• 8th B BB vs. L. Mills (H), 4 PM
• 9th/JV/V B BB vs. Whitewater (H), 5:45/7:15 PM
• 9th/JV/V G BB @ Lakeside, 5:50/7:30 PM
• B Swimming vs. Platteville & Burlington (H), 6 PM
• Wrestling @ Whitewater, 7 PM
- 9 • **3-Hour Early Dismissal**
• PLAN Testing @ HS
- 10 • Sullivan 5th Gr. Choral Presentation, 6:30 PM, at Sullivan
• West 5th Gr. Choral Presentation, 7 PM, at West
• East 5th Gr. Choir Concert, 7 PM, East Gymnasium
• MS Market Day Pick-Up, 3-4 PM, Cafeteria
• 7th B BB vs. Fort (H), 4 PM
• 8th B BB @ Fort, 4 PM
• 9th/JV/V G BB vs. Beloit Turner (H), 5:45/7:15 PM
- 11 • 9th/JV/V B BB vs. Big Foot (H), 5:45/7:15 PM
• B Swimming @ Milton, 5:45 PM
- 14 • **School Board Meeting, 7 PM, Sullivan Elementary Gym**
• HS Booster Club Mtg., 6:30 PM, in Room M1 @ HS
• HS Band & Choir Concert, 7 PM, HS Auditorium

- 15 • East Grades 3-4 Holiday Program, 6:30 PM, East Gymnasium
• 7th B BB vs. Milton (H), 4 PM
• 8th B BB @ Milton, 4 PM
• 9th/JV/V G BB vs. E. Troy (H), 5:45/7:15 PM
• V Swimming vs. St. John's Northwestern Military (H), 6 PM
- 16 • East Kindergarten Holiday Program, 2 PM, East Gymnasium
- 17 • East P.T.O. Mtg., 6:30 PM, East Library
• East Grades 1-2 Holiday Program, 6:30 PM, East Gymnasium
• 7th B BB @ Milton, 4 PM
• 8th B BB vs. Milton (H), 4 PM
• 9th/JV/V B BB @ Beloit Turner, 5:45/7:15 PM
• Gymnastics @ Westosha Central with Burlington, 6:00 PM
• Wrestling vs. Evansville (H), 7 PM
- 18 • 9th/JV/V G BB @ Evansville, 5:45/7:15 PM
- 19 • Wrestling Dual Tournament @ Beloit Turner, 8 AM
- 21 • JV/V B BB vs. Madison High School, 5:45/7:15 PM
- 22 • MS Rewards for Fund-Raiser Winners
• JV/V G BB vs. Delavan-Darien (H), 5:45/7:15 PM
- 30 • 9th/JV/V G BB vs. Lake Mills (H), 5:45/7:15 PM

**NO SCHOOL - WINTER BREAK
December 23 - January 1**

The School District of Jefferson does not discriminate against pupils on the basis of sex, race, religion, national origin, ancestry, creed, pregnancy, marital or parental status, sexual orientation, or physical, mental, emotional, or learning disability in their education programs and activities and also employment practices.

For questions or information, please contact the School District Office at (920) 675-1000 or access our Web site at: www.jefferson.k12.wi.us.

School District of Jefferson
206 S. Taft Avenue
Jefferson, WI 53549

Non-Profit Organization
Standard Mail
U.S. Postage Paid
Jefferson, WI
Permit No. 252

Delivery on or before November 30

POSTAL CUSTOMER