

Jefferson School District 2006-2007 Community Report

A Message from the Superintendent

Each year the School District of Jefferson's practice is to provide citizens with a report on its progress in many areas. Some characterize this as the district's report card.

As in previous years, this report provides you with results of our students' performance on state standardized tests, information on student activities, specific courses taken, attendance, graduation rates, future plans of our graduates, their attendance at postsecondary institutions, co-curricular activity participation, and more.

In addition to what you will see here, we strongly encourage citizens to learn more about the day-to-day activities of our children and their many successes by accessing our district web page at www.jefferson.k12.wi.us. We believe this electronic medium is our most immediate way of communicating with the local community. The website provides a snapshot of the many good programs in the School District of Jefferson. It also allows those accessing our website to learn more about our community.

We strongly encourage our citizens to become actively engaged in the education of our children. Whether you are a parent with children in our schools, a senior citizen, a taxpayer, or a young family with children about to enter our schools, we strongly encourage you to visit your local schools and contribute to the growth of our future leaders. One hour of your time once a week would have a significant impact on the lives of our children. We thank you for your continued interest and support, and we look forward to working with you in the future.

Michael Swartz, Superintendent

The comparison information shown throughout this report was supplied through Wisconsin's Information Network for Successful Schools (WINSS) program which is linked to the Wisconsin Department of Public Instruction's (DPI) web site. Information on other schools in Wisconsin may be obtained by logging on to the Department of Public Instruction's web site, www.dpi.state.wi.us and clicking on the WINSS icon. Questions on the comparison reports may be directed to Donald Nolan 920-674-1062

Mission Statement

The School District of Jefferson, in partnership with our community, provides an environment of excellence and opportunity for all

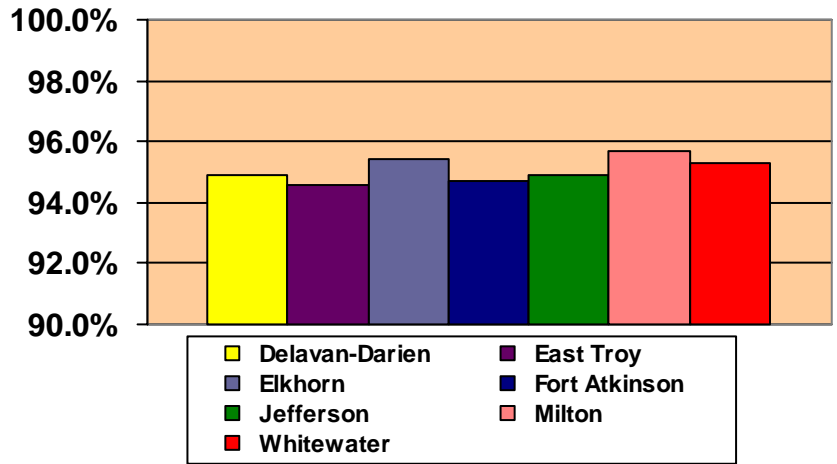
Jefferson School District
Jefferson, WI

www.jefferson.k12.wi.us

The following data compares Jefferson with other schools in the Southern Lakes Athletic Conference.

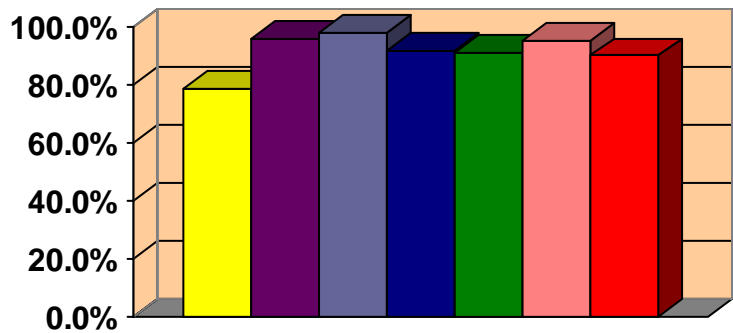
Attendance Rate

Attendance is face-to-face instructional contact between a student and a teacher. It is collected for the entire school year. The attendance rate is actual days of attendance divided by possible days of attendance, expressed as a percentage. The smallest reportable unit of attendance is one-half day.



Graduation

Graduates are students who complete the prescribed course of study established by a local school district. The graduation rate is determined by dividing the number of seniors who met graduation requirements by the number of senior's enrolled at Jefferson High School.

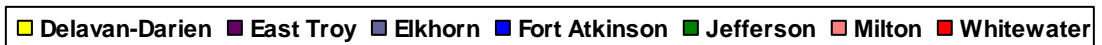
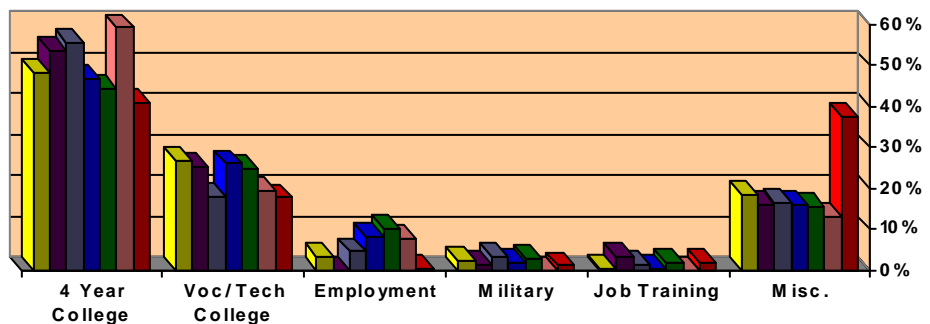


Graduation requirements –Wisconsin law establishes a minimum number of credits required for high school graduates. The class of 2007 was required to complete 26 credits to be eligible for graduation.



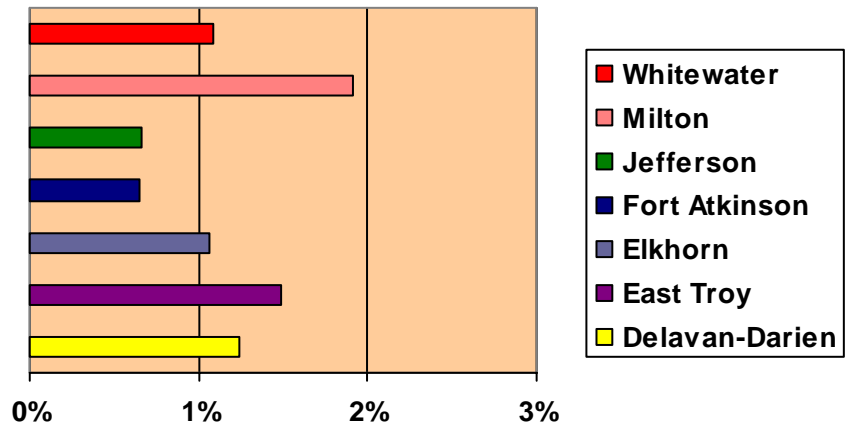
Post Graduation Plans

This graph reflects the intentions of 12th graders when surveyed prior to graduation. The miscellaneous category includes the students who selected “undecided,” “other,” or who didn’t return a survey.



Retention Rates

Retentions are students who, by local district policy, must either repeat a grade or need additional time to complete a prescribed program. The number of retentions are reported for all grades except Pre-Kindergarten (Birth through Age 2, EEN for ages three through five, Title 1 Preschool, Head start, and 4-year-old kindergarten).



Advanced Coursework

Advanced Coursework is divided into three types of courses: College Advanced Placement Program (CAPP), Advanced Placement (AP) program; and those considered to be advanced by the Wisconsin Department of Public Instruction. Foreign Languages are included in this section. Jefferson School District offered 2 AP courses for 2006-2007.

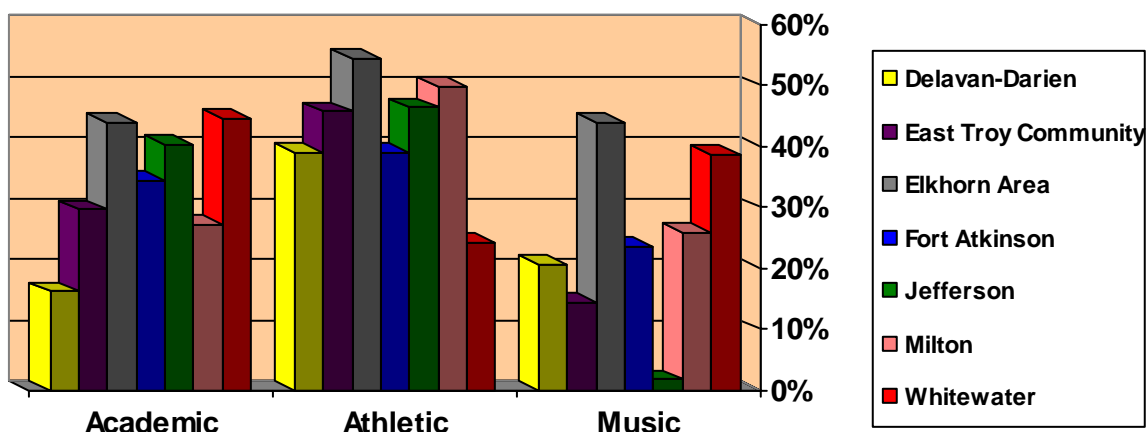
AP Courses

Jefferson High School had 26 students enrolled in AP English in 2006-2007

Jefferson High School had 10 students enrolled in European History in 2006-2007

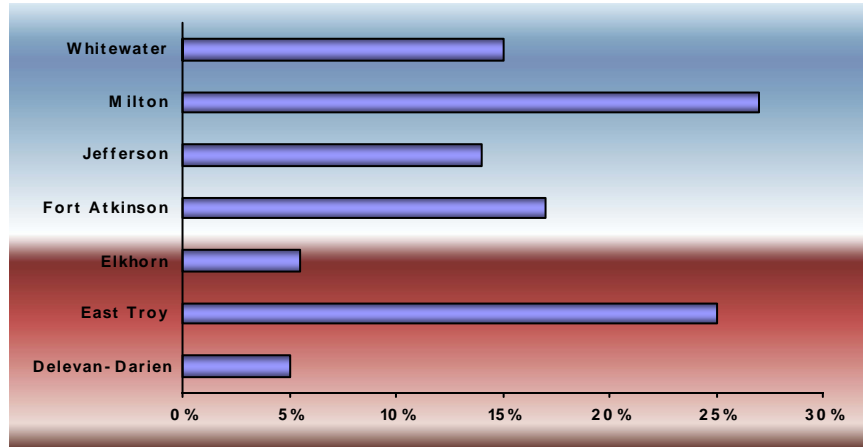
Extra/Co-Curricular Activities

A large percentage of Jefferson students participate in a variety of extra and co-curricular activities offered at Jefferson High School. The participation rate for each category is calculated by dividing the number of participants by the third Friday in September enrollment. This chart demonstrates the level of participation by Jefferson students in grades 6-12 for the 2006-2007 school year.



School-Sponsored Community Activities

While community work is not required for graduation many Jefferson students share their time and talents with others in our community. The School District of Jefferson continues to explore diverse partnership opportunities with the community.



Habitual Truancy Rate

Habitual truants are defined as students who are absent from school without an acceptable excuse [s.118.16(4) and s.118.15] for part or all of five or more days on which school is held during a semester. Habitual truants are reported for all grades except Pre-kindergarten (birth through age 2, students with disabilities ages three through five, Title 1 Preschool, Head Start, and 4-year-old kindergarten). The habitual truancy rate is the number of habitual truants, divided by Kindergarten through 12th grade enrollment, counted on the third Friday in September.

	Total Enrolment (K-12)	Number of Students Habitually Truant	Truancy Rate
Delavan-Darien	2560	359	14%
East Troy	1685	18	1.1%
Elkhorn	2953	125	4.2%
Fort Atkinson	2647	37	1.4%
Jefferson	1783	5	.3%
Milton	3188	168	5.3%
Whitewater	1965	57	2.9%

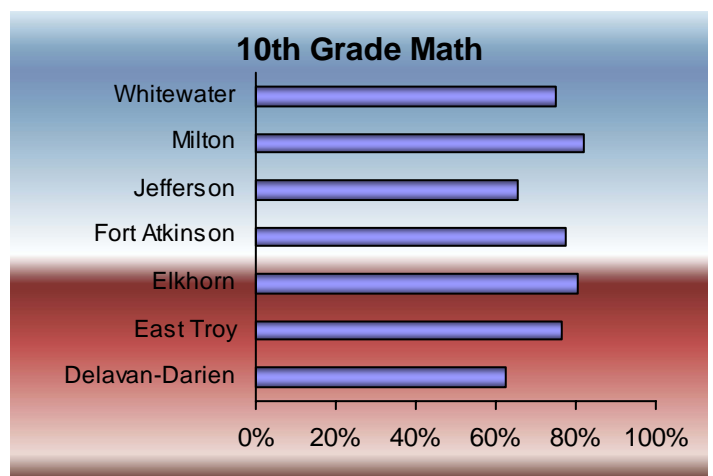
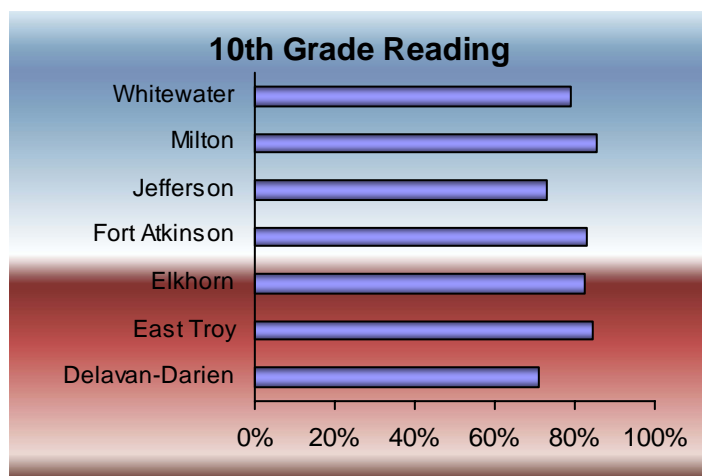
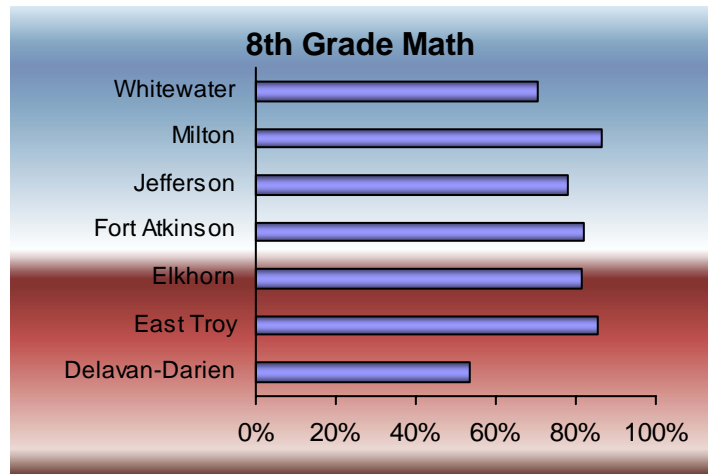
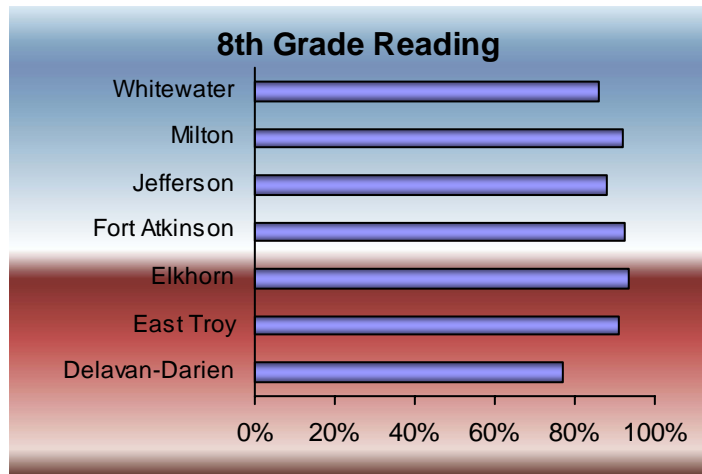
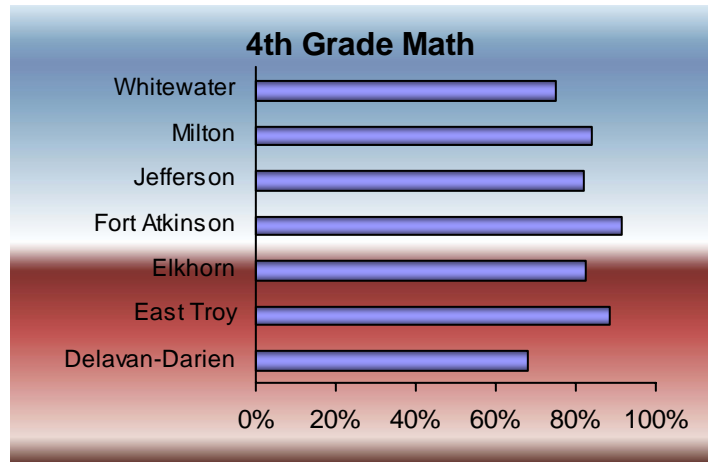
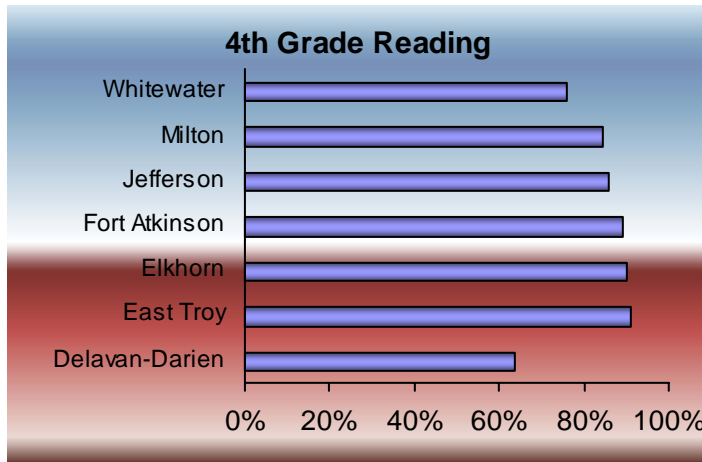
Dropout Rate

A dropout is defined as a student who was enrolled in school at some time during the previous school year, was not enrolled at the reporting time of the current school year (third Friday in September), has not graduated from high school or completed a state- or district-approved educational program, and does not meet any of the following exclusionary conditions: transfer to another school district, private school, or state- or district-approved educational program; temporary absence due to expulsion, suspension, or school-excused illness; death.

	Total Enrolment (7-12)	Number of Drop Outs	Drop Out Rate
Delavan-Darien	1281	31	2.441%
East Troy	896	6	.662%
Elkhorn	1472	5	.342%
Fort Atkinson	1317	16	1.210%
Jefferson	885	14	1.596%
Milton	1511	16	1.058%
Whitewater	985	16	1.586%

WKCE Examination Results

The WKCE (Wisconsin Knowledge and Concepts Examination) is a statewide standardized exam given each year to students in grades 3 through 8 and 10. The exam measures student achievement in five subject areas: reading, language arts, mathematics, science, social studies. Students also provide a rough draft writing sample. The following data shows the percentage of students who scored proficient or above on the Math and Reading exams.



The following data is for the Jefferson School District.

Expulsion Rate

Expulsions are sanctions imposed on pupils by formal school board action which, for purposes of discipline, prohibit pupils from attending school. Expulsion action is described in ss.120.13(1)(C) and 119.25, Wisconsin Statutes.

Grade	Students With or Without Disabilities	Total Enrollment	No. of Students Expelled	Expulsion Rate
Elementary Pre K - 5	Students With Disabilities	139	0	0.0%
	Students Without Disabilities	684	0	0.0%
Middle School	Students With Disabilities	54	1	1.9%
	Students Without Disabilities	302	0	0.0%
High School 9-12	Students With Disabilities	103	2	1.9%
	Students Without Disabilities	534	6	1.1%

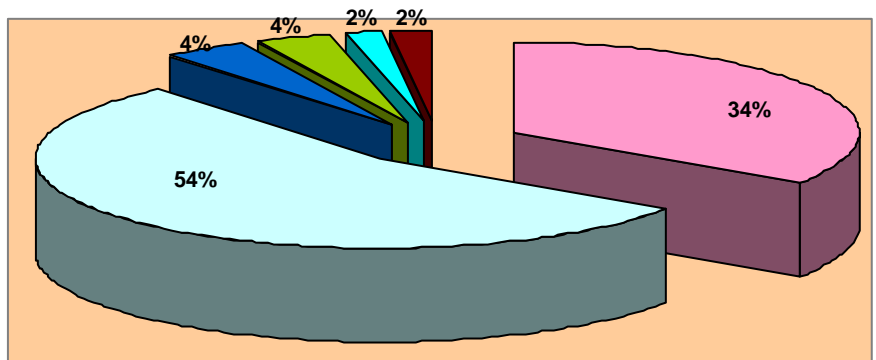
Suspension Rate

Suspensions are absences from school imposed by the school district for disciplinary reasons. The suspension rate is the total number of days possible divided by the total number of days students were suspended.

Grade	Students With or Without Disabilities	Total Enrollment	No. of Students Suspended	Suspension Rate
Elementary Pre K - 5	Students With Disabilities	139	0	0.0%
	Students Without Disabilities	684	0	0.0%
Middle School	Students With Disabilities	54	13	24.1%
	Students Without Disabilities	302	30	9.9%
High School 9-12	Students With Disabilities	103	17	16.5%
	Students Without Disabilities	534	23	4.3%

Budgeted Revenue Sources

General Fund Revenues are financial resources available from local, state, and federal sources.



■ Tax Levy
 ■ WI State Equalized Aid
 ■ Categ. Aid
 ■ Fed. Aid
 ■ Open Enroll.
 ■ Other

Major Areas of General Fund Spending

General Fund expenses are used for Fund 10 operations. They include expenditures for operations/administration/other, instruction, support services, and transportation.

General Fund expenditures represent the major sources of expenses within a school district. Other costs incurred by the District not reported here include special projects, debt service, and food service.

